

# Postal Code 78732

# Residential Statistics



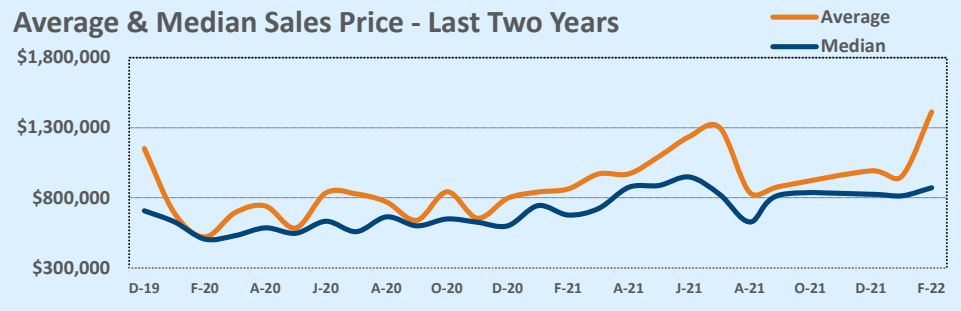
# December 2021

Listings	This Month			Year-to-Date		
	Dec 2021	Dec 2020	Change	2021	2020	Change
Single Family Sales	21	22	-4.5%	339	369	-8.1%
Condo/TH Sales	--	2	--	11	9	+22.2%
<b>Total Sales</b>	<b>21</b>	<b>24</b>	<b>-12.5%</b>	<b>350</b>	<b>378</b>	<b>-7.4%</b>
New Homes Only	1	--	--	16	8	+100.0%
Resale Only	20	24	-16.7%	334	370	-9.7%
Sales Volume	\$20,841,500	\$19,117,630	+9.0%	\$355,709,571	\$281,039,163	+26.6%
New Listings	11	17	-35.3%	378	419	-9.8%
Pending	--	--	--	--	--	--
Withdrawn	1	4	-75.0%	8	16	-50.0%
Expired	1	4	-75.0%	8	16	-50.0%
Months of Inventory	0.7	0.8	-12.5%	N/A	N/A	--

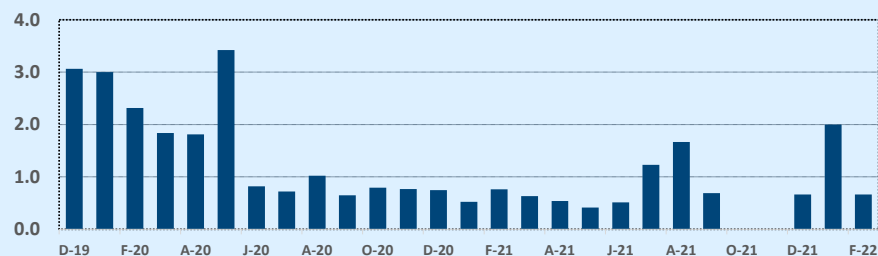
Price Range	This Month			Year-to-Date		
	New	Sales	DOM	New	Sales	DOM
\$149,999 or under	--	--	--	1	--	--
\$150,000- \$199,999	--	--	--	1	--	--
\$200,000- \$249,999	--	--	--	--	--	--
\$250,000- \$299,999	--	--	--	1	1	2
\$300,000- \$349,999	--	--	--	--	--	--
\$350,000- \$399,999	--	--	--	2	3	25
\$400,000- \$449,999	--	--	--	4	1	8
\$450,000- \$499,999	--	--	--	11	6	16
\$500,000- \$549,999	--	1	5	17	15	44
\$550,000- \$599,999	--	2	6	31	25	33
\$600,000- \$699,999	1	4	46	63	65	16
\$700,000- \$799,999	--	2	15	60	45	13
\$800,000- \$899,999	2	4	14	41	43	11
\$900,000- \$999,999	--	1	4	26	27	10
\$1M - \$1.99M	5	6	4	97	110	17
\$2M - \$2.99M	2	1	2	14	5	11
\$3M+	1	--	--	9	4	145
<b>Totals</b>	<b>11</b>	<b>21</b>	<b>15</b>	<b>378</b>	<b>350</b>	<b>18</b>

Average	This Month			Year-to-Date		
	Dec 2021	Dec 2020	Change	2021	2020	Change
List Price	\$976,622	\$807,765	+20.9%	\$976,068	\$755,017	+29.3%
List Price/SqFt	\$308	\$244	+26.0%	\$289	\$212	+36.2%
Sold Price	\$992,452	\$796,568	+24.6%	\$1,016,313	\$743,490	+36.7%
Sold Price/SqFt	\$313	\$244	+28.1%	\$303	\$210	+44.5%
Sold Price / Orig LP	101.6%	101.0%	+0.6%	106.5%	99.4%	+7.2%
Days on Market	15	38	-61.2%	18	29	-37.5%

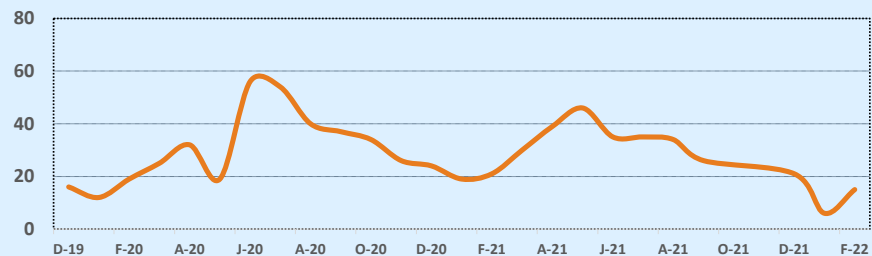
Median	This Month			Year-to-Date		
	Dec 2021	Dec 2020	Change	2021	2020	Change
List Price	\$799,500	\$554,500	+44.2%	\$782,000	\$596,750	+31.0%
List Price/SqFt	\$292	\$213	+36.9%	\$262	\$191	+36.8%
Sold Price	\$825,000	\$600,000	+37.5%	\$821,000	\$600,000	+36.8%
Sold Price/SqFt	\$295	\$224	+31.8%	\$281	\$192	+46.1%
Sold Price / Orig LP	101.0%	100.0%	+1.0%	104.0%	100.0%	+4.0%
Days on Market	5	9	-41.2%	6	8	-25.0%



## Months of Inventory - Last Two Years



## Number of Sales - Last Two Years



Based on information from the Austin Board of REALTORS® (alternatively, from ACTRIS). Neither the Board nor ACTRIS guarantees or is in any way responsible for its accuracy. The Austin Board of REALTORS®, ACTRIS and their affiliates provide the MLS and all content therein "AS IS" and without any warranty, express or implied. Data maintained by the Board or ACTRIS may not reflect all real estate activity in the market.